

SPECIAL MEASURES IN NORTHERN IRELAND'S CRIMINAL COURTS

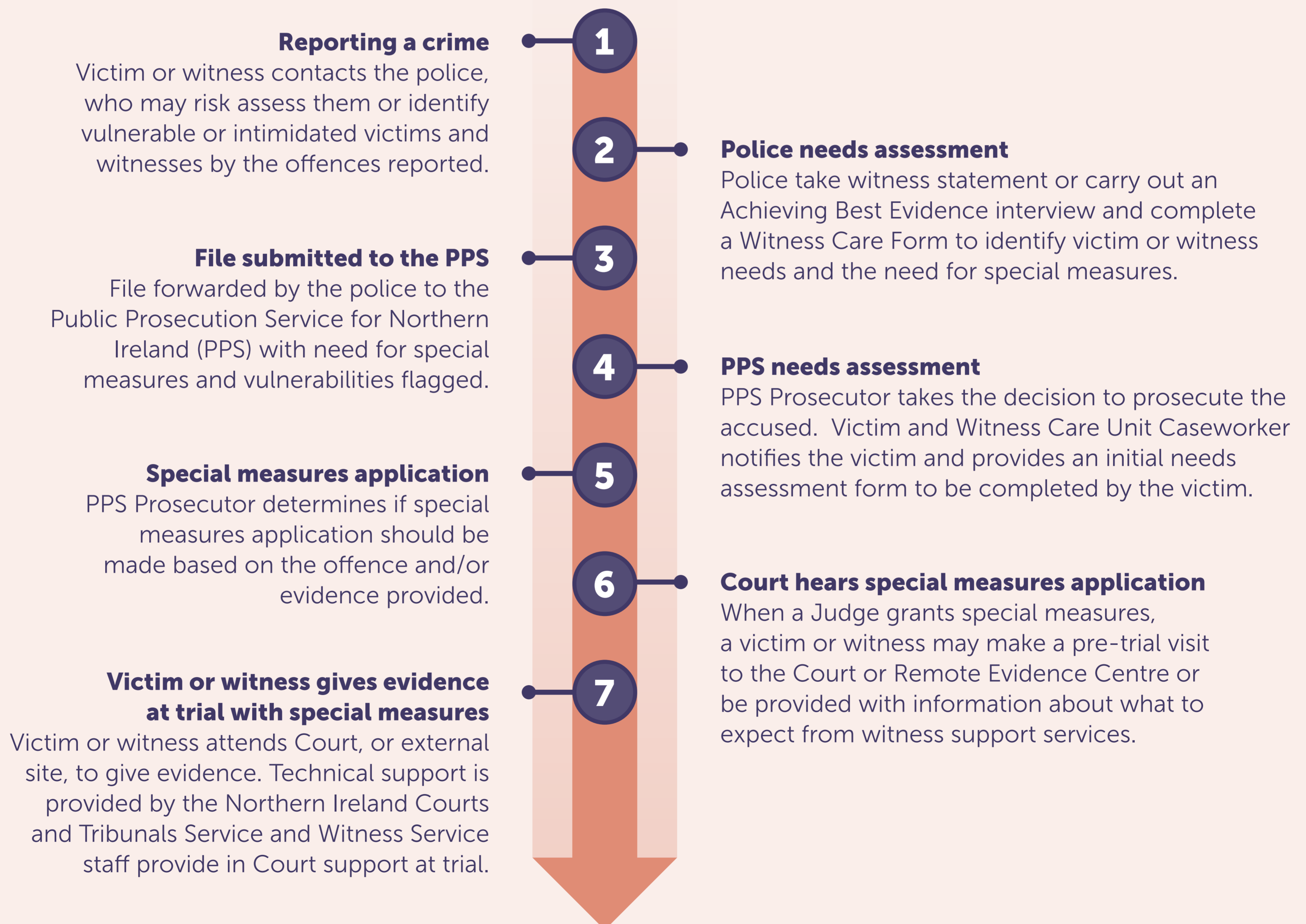
AN INSPECTION OF THEIR USE AND OPERATION

Criminal Justice Inspection
Northern Ireland
a better justice system for all



FOLLOW US:   

PROCESS FOR ASSESSING THE NEED FOR SPECIAL MEASURES AND DELIVERING THE MEASURES APPROVED



SPECIAL MEASURES IN NORTHERN IRELAND'S CRIMINAL COURTS

AN INSPECTION OF THEIR USE AND OPERATION

Criminal Justice Inspection
Northern Ireland
a better justice system for all



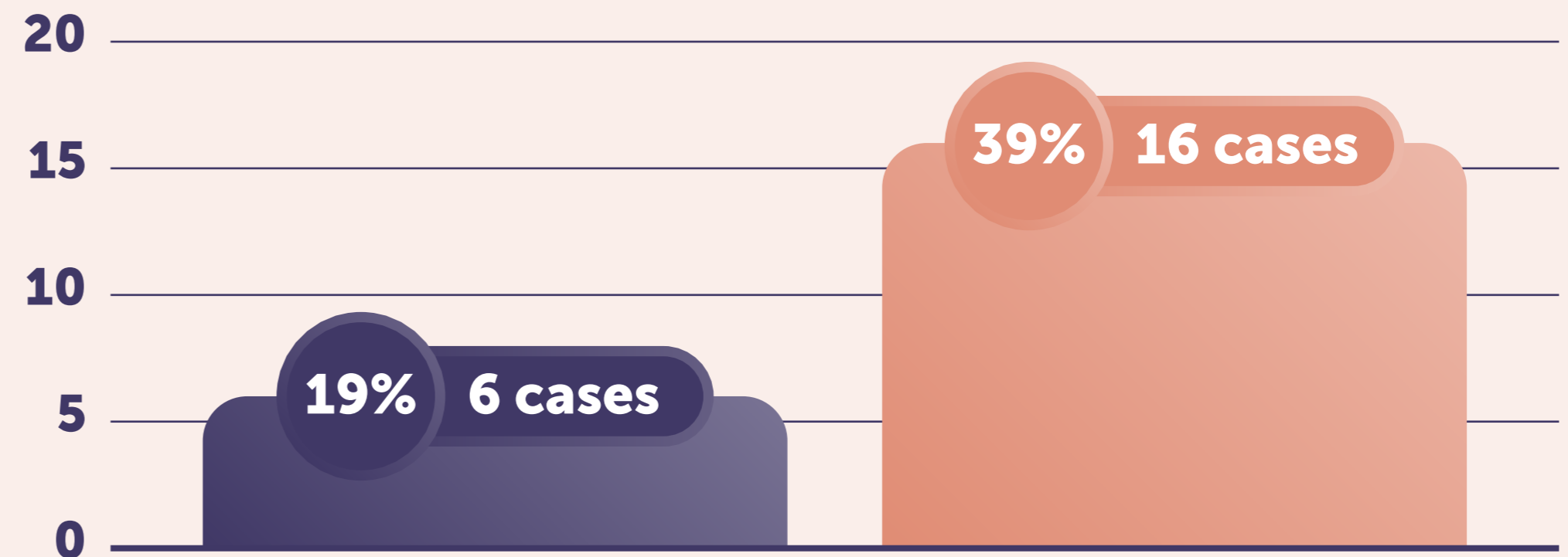
FOLLOW US:   

CASE FILE REVIEW FINDINGS

Out of the 31 automatically eligible cases, Prosecutors identified a need and considered special measures applications in only six cases (19%) (despite the PSNI having flagged the need to the PPS in 16 cases (39%)).

31

Total cases where victims and witnesses were automatically eligible to apply for special measures



Public
Prosecution
Service



SPECIAL MEASURES IN NORTHERN IRELAND'S CRIMINAL COURTS

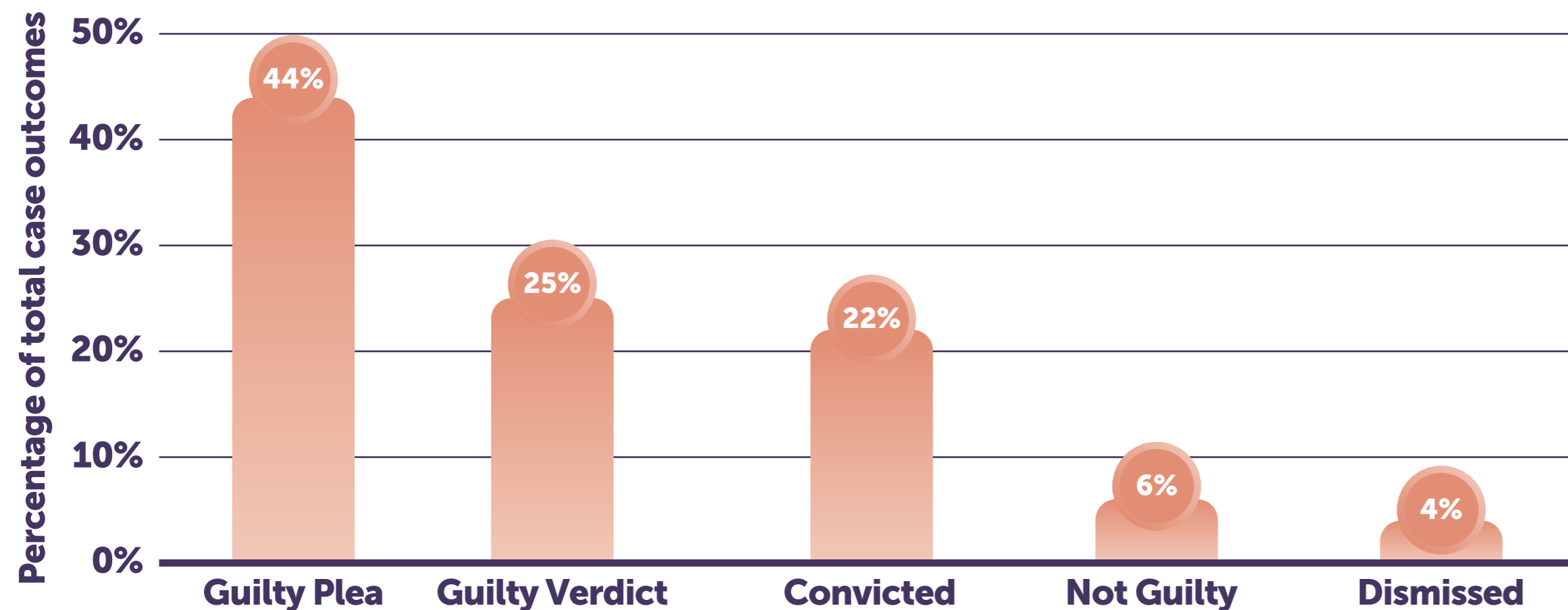
AN INSPECTION OF THEIR USE AND OPERATION

Criminal Justice Inspection
Northern Ireland
a better justice system for all



FOLLOW US:   

REMOTE EVIDENCE CENTRE (REC) FEEDBACK AND OUTCOMES OF CASES

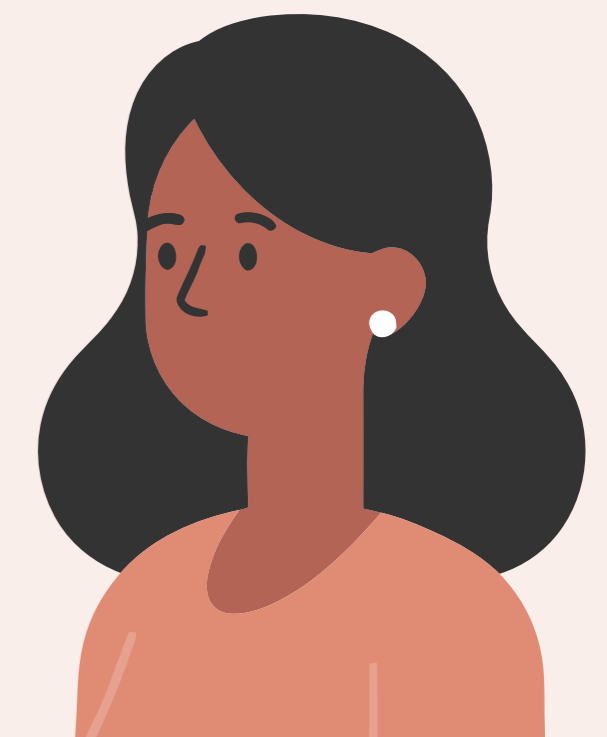


Outcome figures for Crown, Youth and Magistrates' Courts

(From January to June 2025)

"I couldn't possibly have faced going to court - if it wasn't for the REC, I wouldn't have turned up."

"I was heard but I wasn't seen by him... had I known about this place beforehand I probably would have reported sooner."



SPECIAL MEASURES IN NORTHERN IRELAND'S CRIMINAL COURTS

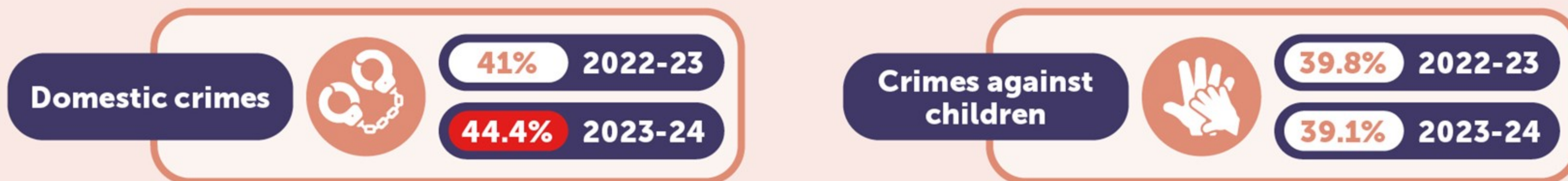
AN INSPECTION OF THEIR USE AND OPERATION

Criminal Justice Inspection Northern Ireland
a better justice system for all



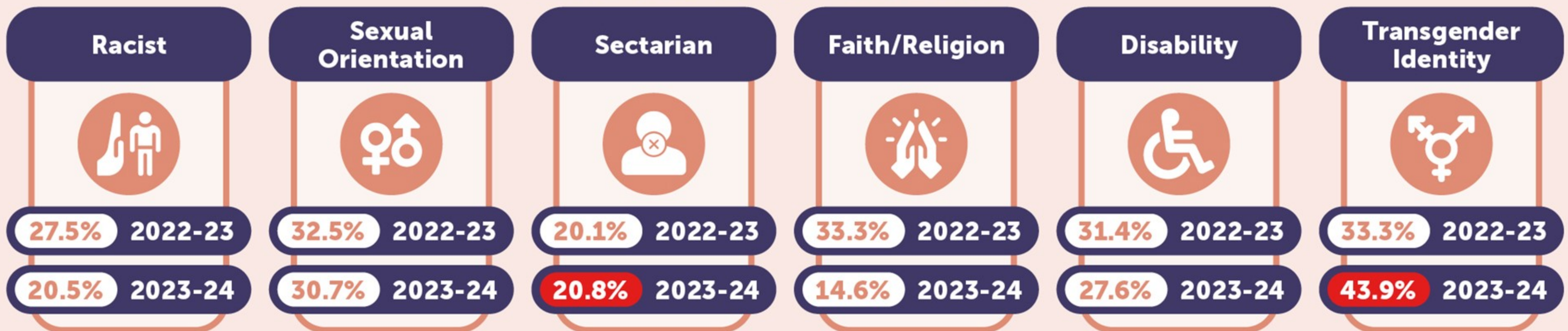
FOLLOW US:

ATTRITION RATES IN 2022-23 AND 2023-24



! Around half of violence against the person and sexual offence crimes do not progress due to evidential difficulties.**

HATE CRIMES (BY CATEGORY)



Source: PSNI

Note: Attrition is the proportion of cases that cannot proceed and drop out of the criminal justice system when a victim and/or witness withdraws their evidence.

** PSNI - NISRA, Outcomes of Crimes Recorded by the Police in Northern Ireland 2015/16 to 2023/24, published November 2024

SPECIAL MEASURES IN NORTHERN IRELAND'S CRIMINAL COURTS

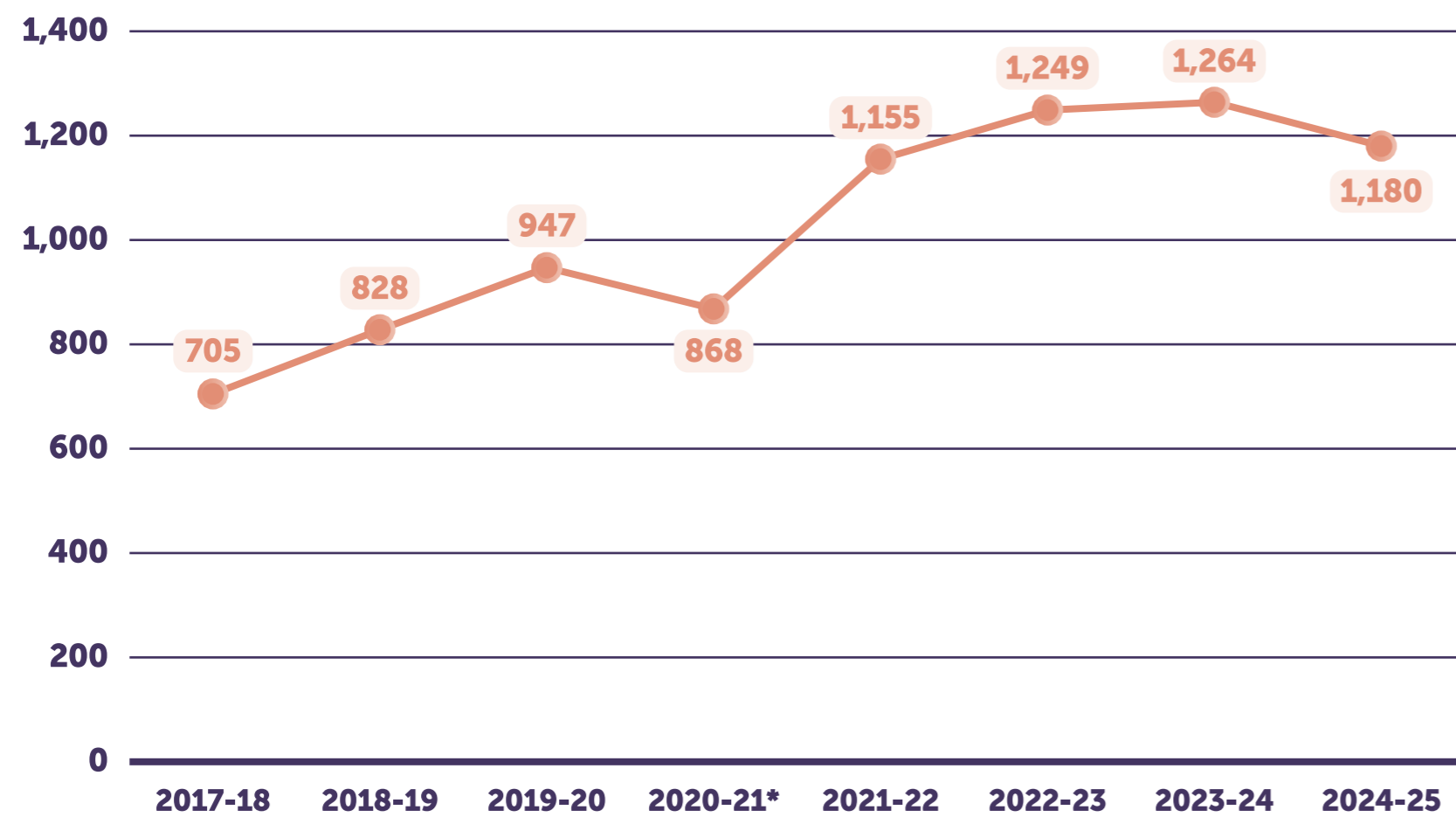
AN INSPECTION OF THEIR USE AND OPERATION

Criminal Justice Inspection
Northern Ireland
a better justice system for all



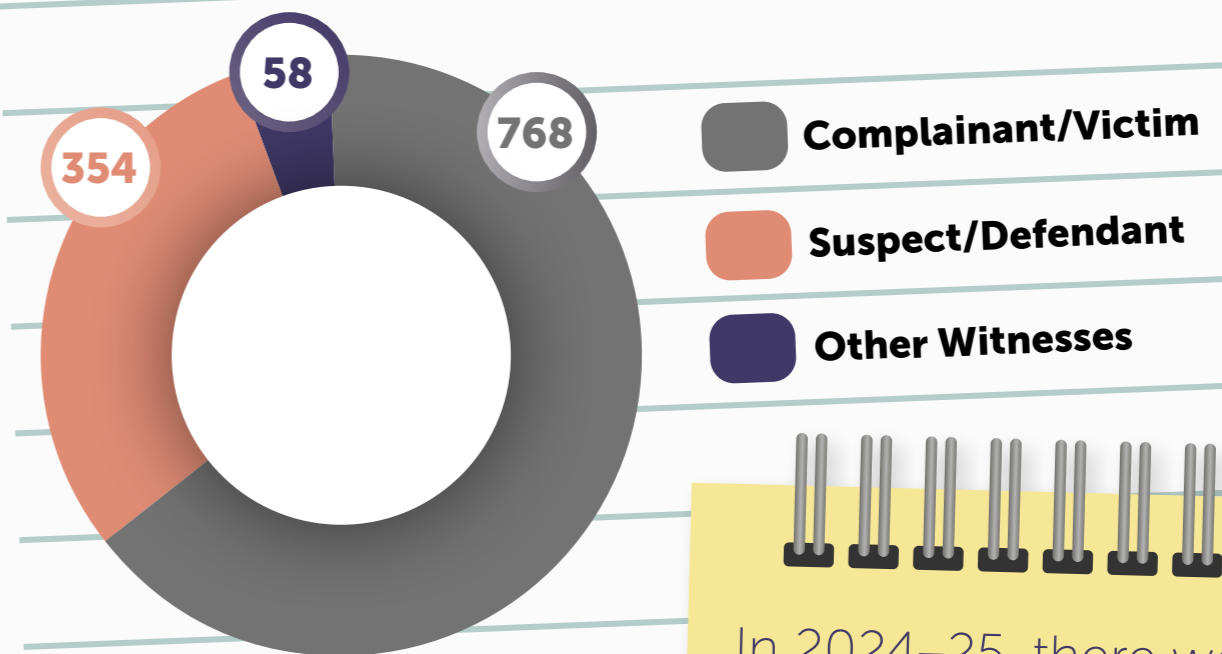
FOLLOW US:   

Registered Intermediaries (RIs) referrals from 2017-18 to 2024-25



*Impacted by the Covid Pandemic

Type of witness that RIs have been requested for 2024-25:



In 2024-25, there were only 4 occasions (0.3%) when RIs assessed a witness and decided that no further RI assistance was required.

SPECIAL MEASURES IN NORTHERN IRELAND'S CRIMINAL COURTS

AN INSPECTION OF THEIR USE AND OPERATION

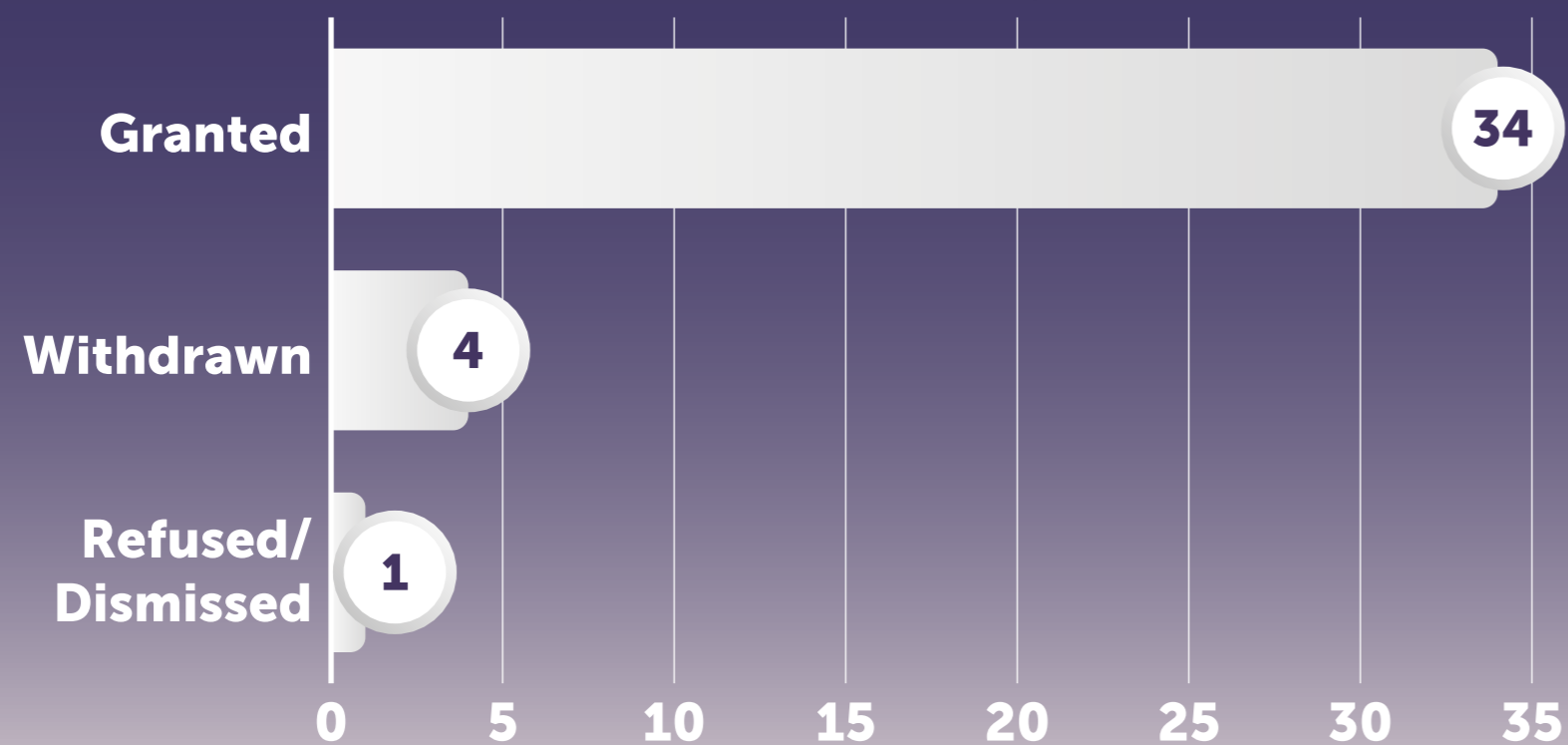
Criminal Justice Inspection
Northern Ireland
a better justice system for all



FOLLOW US:   

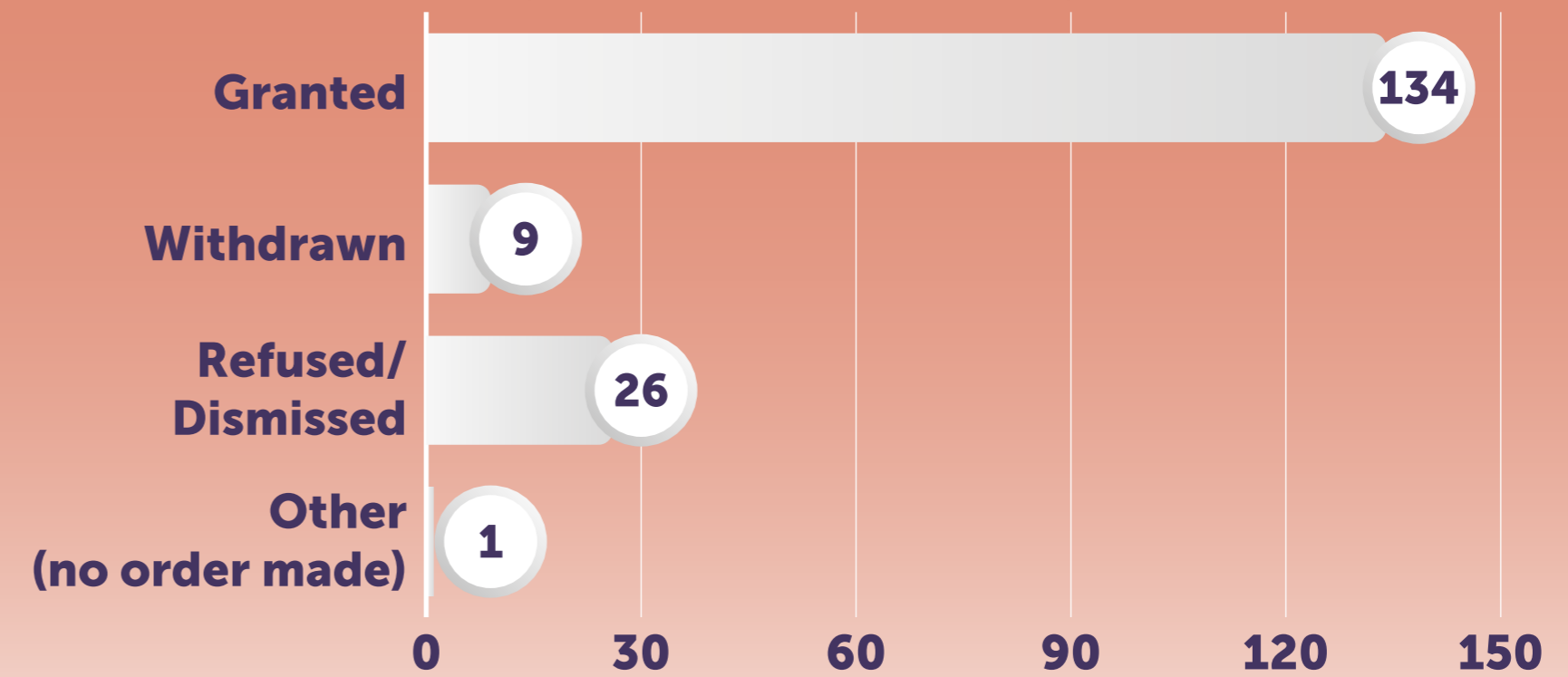
CROWN AND MAGISTRATES' COURT CASES WITH APPLICATIONS MADE FOR SPECIAL MEASURES JANUARY AND FEBRUARY 2025 (NICTS PROVISIONAL FIGURES)

Crown Court



87% Special measures granted

Magistrates' Court



78% Special measures granted