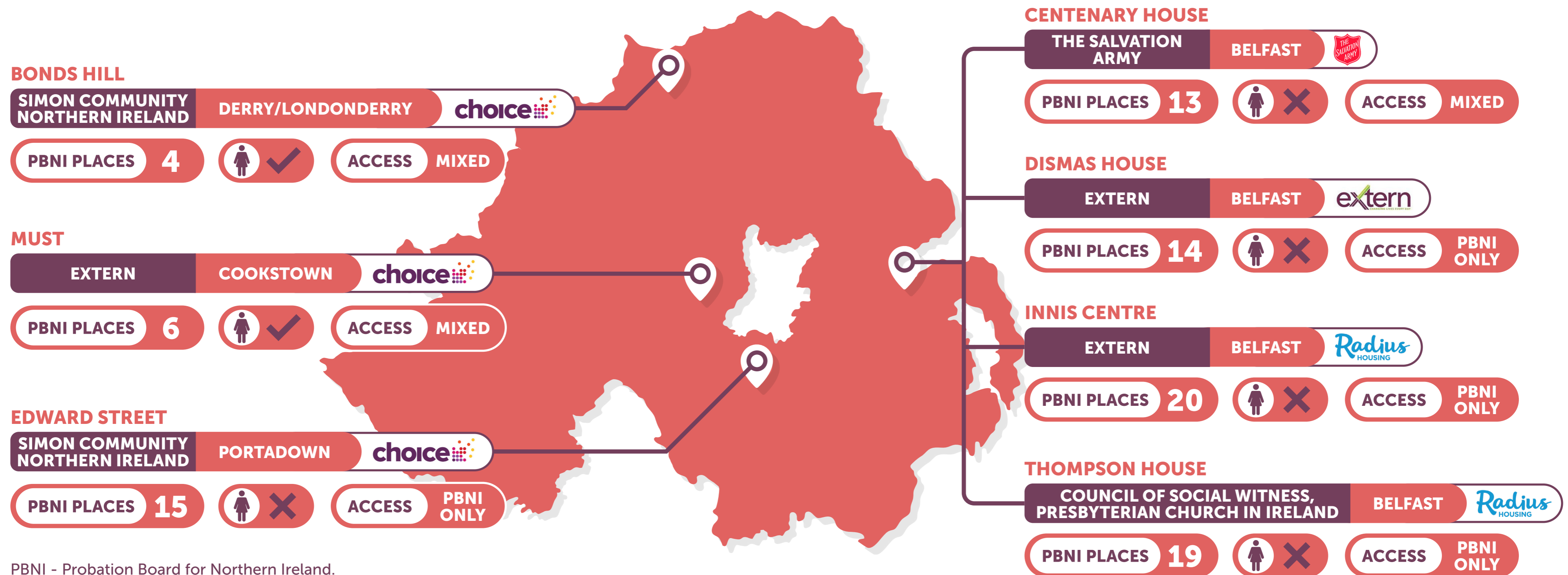


A REVIEW OF PROBATION APPROVED PREMISES IN NORTHERN IRELAND

A FOLLOW-UP REVIEW OF RECOMMENDATION IMPLEMENTATION

Criminal Justice Inspection
Northern Ireland
a better justice system for all



PBNI - Probation Board for Northern Ireland.

A REVIEW OF PROBATION APPROVED PREMISES IN NORTHERN IRELAND

A FOLLOW-UP REVIEW OF RECOMMENDATION IMPLEMENTATION

Criminal Justice Inspection
Northern Ireland
a better justice system for all



PREVIOUS INSPECTION RECOMMENDATIONS

LAST REPORT PUBLISHED 2023



0

Achieved



3

Partially Achieved

3 Operational Recommendations



1

Not Achieved

1 Strategic Recommendation

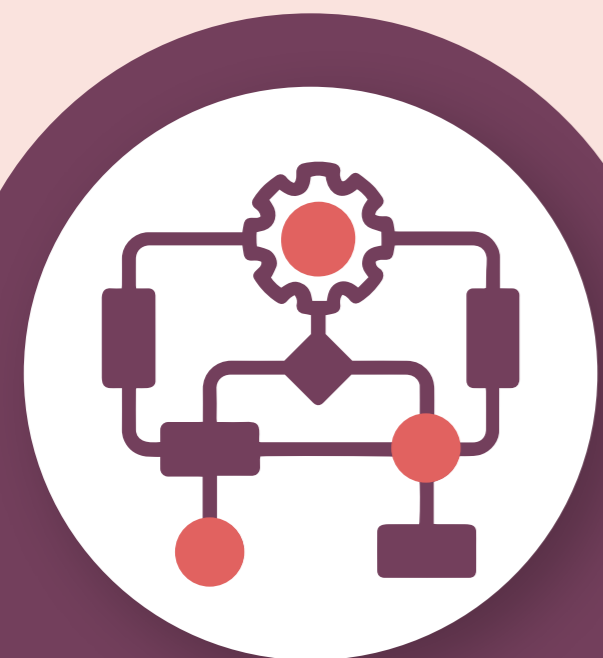
A REVIEW OF PROBATION APPROVED PREMISES IN NORTHERN IRELAND

A FOLLOW-UP REVIEW OF RECOMMENDATION IMPLEMENTATION

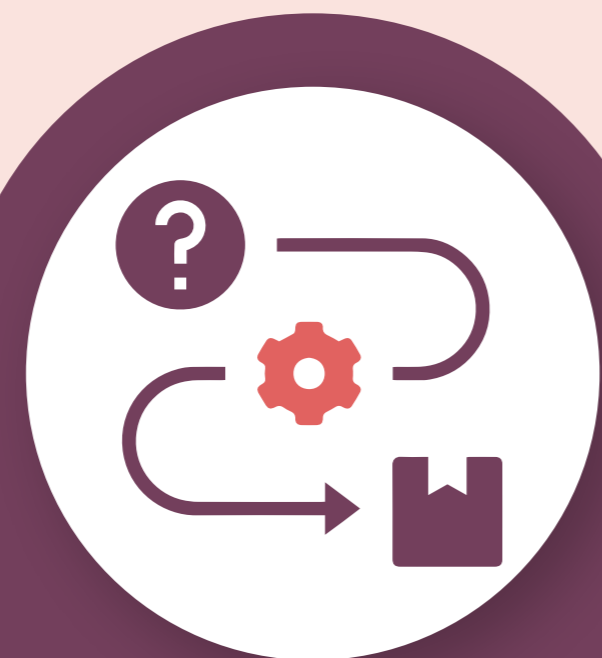
Criminal Justice Inspection
Northern Ireland
a better justice system for all



STRATEGIC RECOMMENDATION



**Strategic
framework**



**Review of
current delivery
model**



**Staffing
model**



**Joint training
and enhanced
understanding
of the role of
approved premises**



**Measure and
monitor the
quality of service
delivery**

A REVIEW OF PROBATION APPROVED PREMISES IN NORTHERN IRELAND

A FOLLOW-UP REVIEW OF RECOMMENDATION IMPLEMENTATION

Criminal Justice Inspection
Northern Ireland
a better justice system for all



OPERATIONAL RECOMMENDATIONS

Northern Ireland Prison Service and Probation Board for Northern Ireland (PBNI)

Remove barriers to resettlement



PBNI and Approved Premises

Closer working on case planning and move-on planning



Public Protection Arrangements Northern Ireland (PPANI) Policy and Practice Sub-group

Full involvement of key workers in public protection arrangements



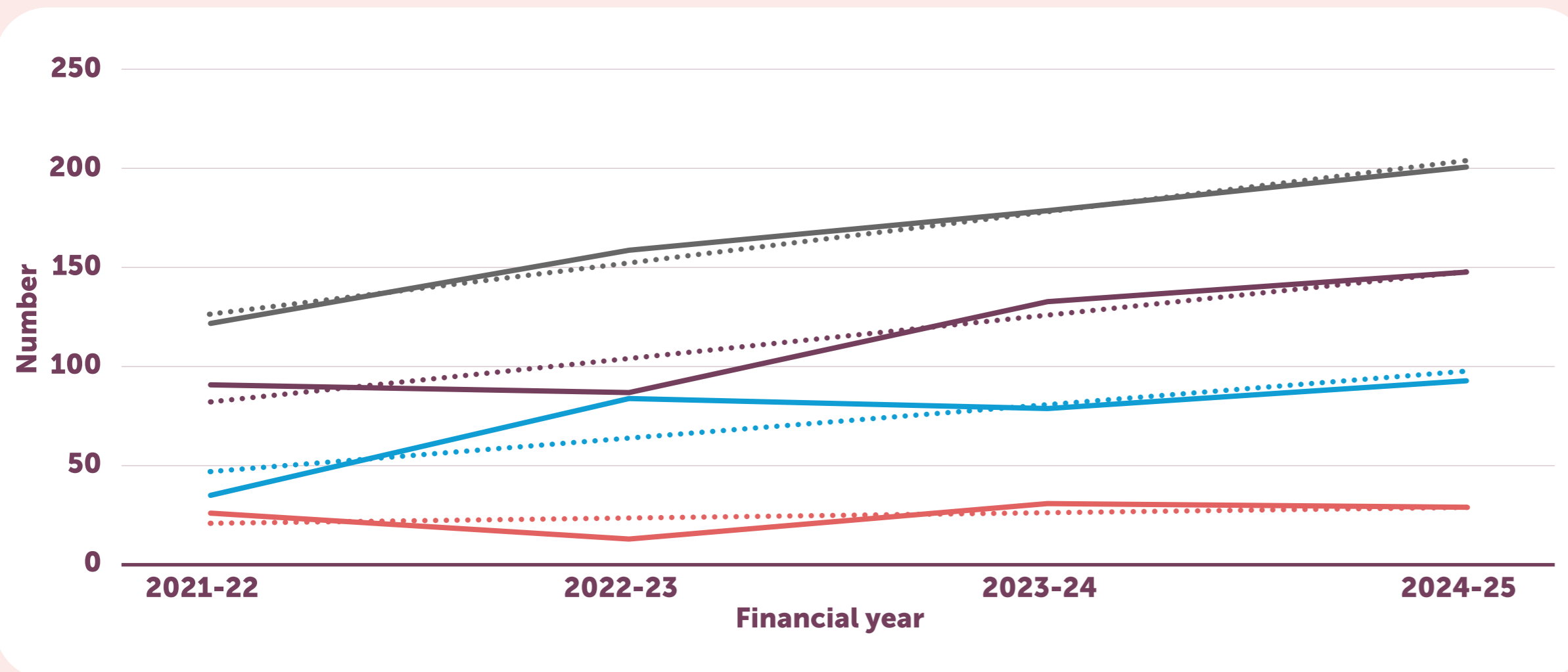
A REVIEW OF PROBATION APPROVED PREMISES IN NORTHERN IRELAND

A FOLLOW-UP REVIEW OF RECOMMENDATION IMPLEMENTATION

Criminal Justice Inspection
Northern Ireland
a better justice system for all



PROBATION BOARD FOR NORTHERN IRELAND TREND DATA FOR NUMBER OF NEW REFERRALS TO APPROVED PREMISES AND RISK PROFILE FROM 2021-22 TO 2024-25



- Number of new referrals
- Linear (Number of new referrals)
- Assessed as high likelihood of reoffending
- Linear (Assessed as high likelihood of reoffending)
- Subject to PPANI
- Linear (Subject to PPANI)
- Assessed as Significant Risk of Serious Harm (SROSH)
- Linear (Assessed as SROSH)

Source: Figure 1, CJI Review of Probation Approved Premises in Northern Ireland: A Follow-Up Review of recommendation implementation, June 2026