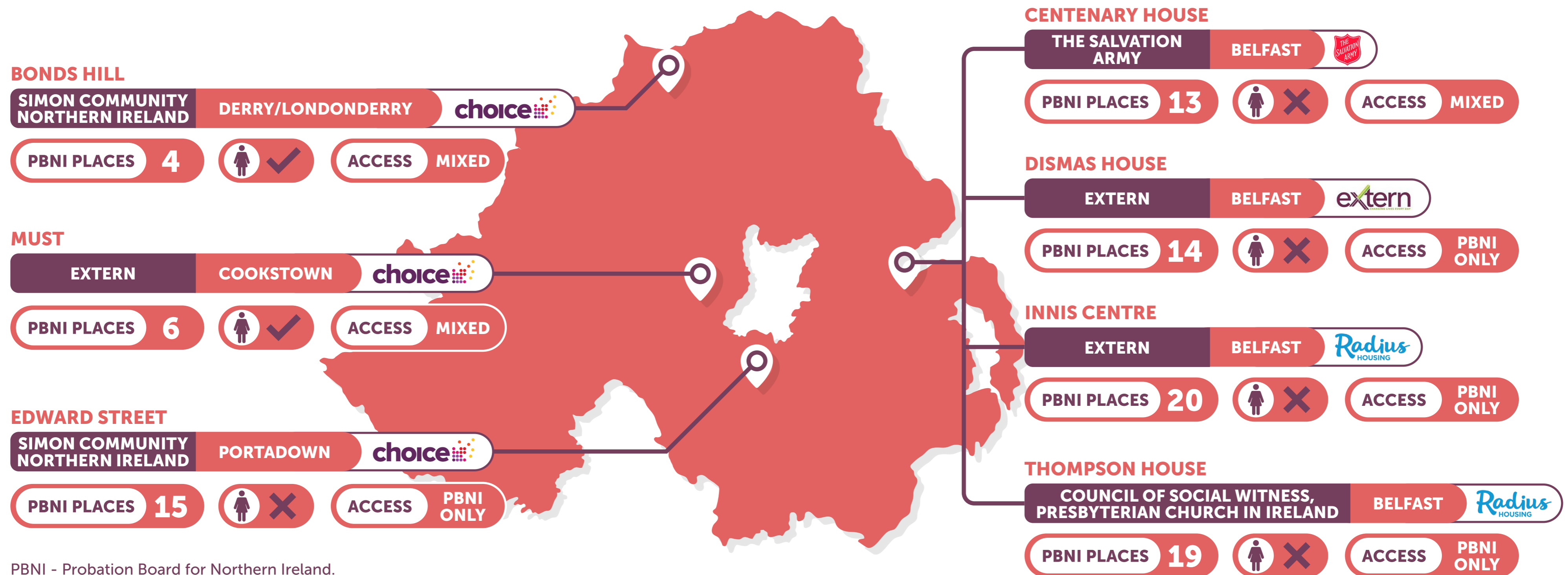


# A REVIEW OF PROBATION APPROVED PREMISES IN NORTHERN IRELAND

A FOLLOW-UP REVIEW OF RECOMMENDATION IMPLEMENTATION

Criminal Justice Inspection  
Northern Ireland  
*a better justice system for all*



PBNI - Probation Board for Northern Ireland.

# A REVIEW OF PROBATION APPROVED PREMISES IN NORTHERN IRELAND

A FOLLOW-UP REVIEW OF RECOMMENDATION IMPLEMENTATION

Criminal Justice Inspection  
Northern Ireland  
*a better justice system for all*



## PREVIOUS INSPECTION RECOMMENDATIONS

LAST REPORT PUBLISHED 2023



0

**Achieved**



3

**Partially Achieved**

**3** Operational Recommendations



1

**Not Achieved**

**1** Strategic Recommendation

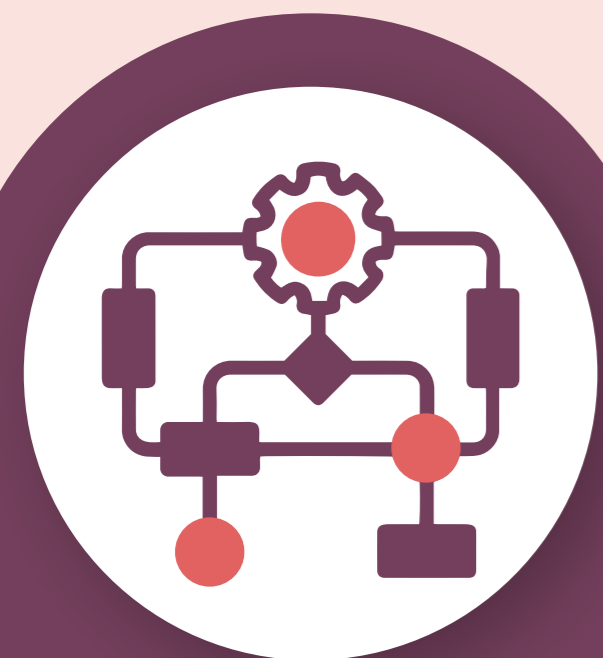
# A REVIEW OF PROBATION APPROVED PREMISES IN NORTHERN IRELAND

A FOLLOW-UP REVIEW OF RECOMMENDATION IMPLEMENTATION

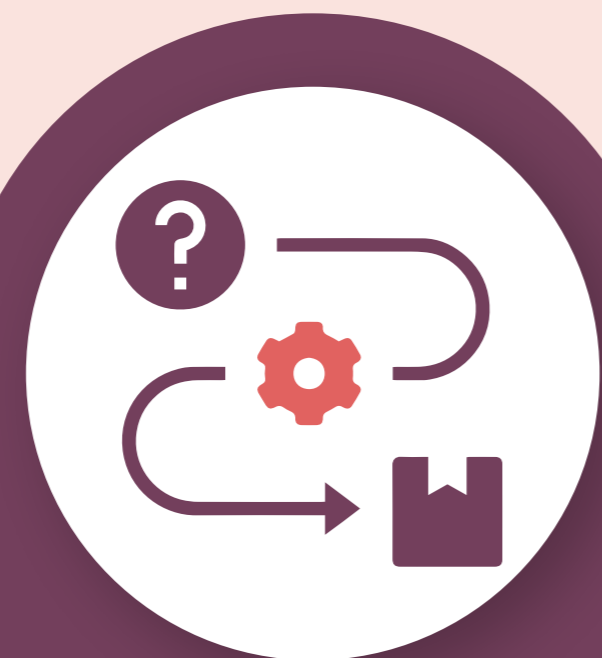
Criminal Justice Inspection  
Northern Ireland  
*a better justice system for all*



## STRATEGIC RECOMMENDATION



**Strategic  
framework**



**Review of  
current delivery  
model**



**Staffing  
model**



**Joint training  
and enhanced  
understanding  
of the role of  
approved premises**



**Measure and  
monitor the  
quality-of-service  
delivery**

# A REVIEW OF PROBATION APPROVED PREMISES IN NORTHERN IRELAND

A FOLLOW-UP REVIEW OF RECOMMENDATION IMPLEMENTATION

Criminal Justice Inspection  
Northern Ireland  
*a better justice system for all*



## OPERATIONAL RECOMMENDATIONS

### Northern Ireland Prison Service and Probation Board for Northern Ireland (PBNI)

Remove barriers to resettlement



### PBNI and Approved Premises

Closer working on case planning and move-on planning



### Public Protection Arrangements Northern Ireland (PPANI) Policy and Practice Sub-group

Full involvement of key workers in public protection arrangements



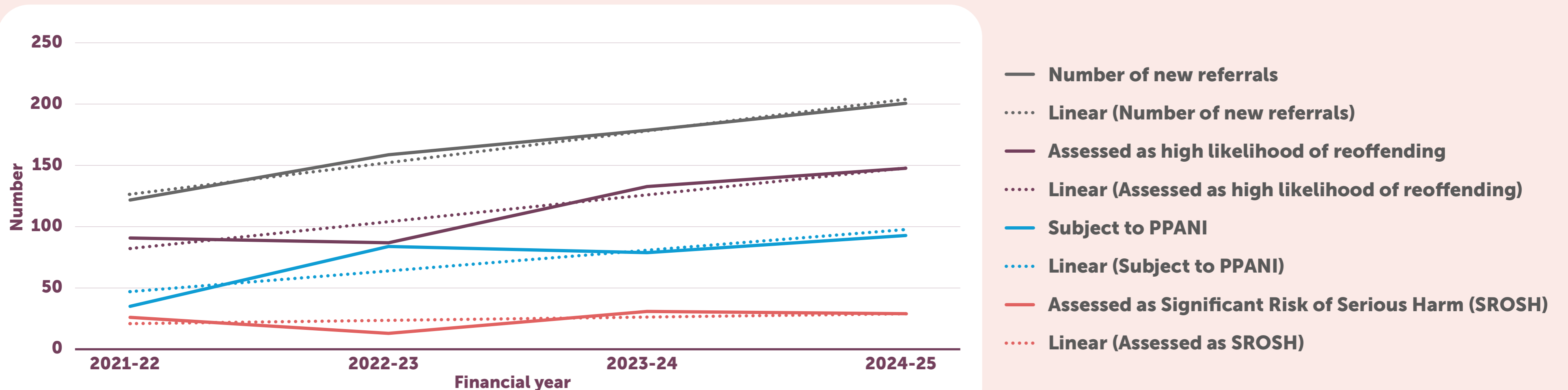
# A REVIEW OF PROBATION APPROVED PREMISES IN NORTHERN IRELAND

A FOLLOW-UP REVIEW OF RECOMMENDATION IMPLEMENTATION

Criminal Justice Inspection  
Northern Ireland  
*a better justice system for all*



## PROBATION BOARD FOR NORTHERN IRELAND TREND DATA FOR NUMBER OF NEW REFERRALS TO APPROVED PREMISES AND RISK PROFILE FROM 2021-22 TO 2024-25



Source: Figure 1, CJI Review of Probation Approved Premises in Northern Ireland: A Follow-Up Review of recommendation implementation, June 2026